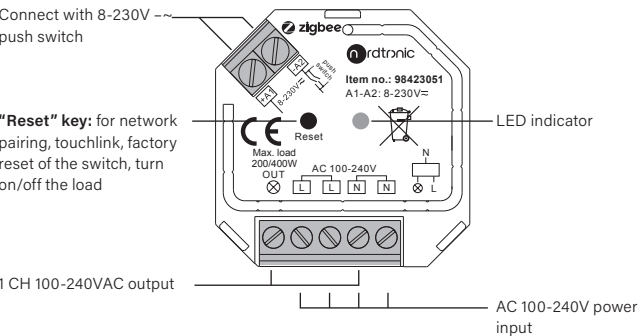
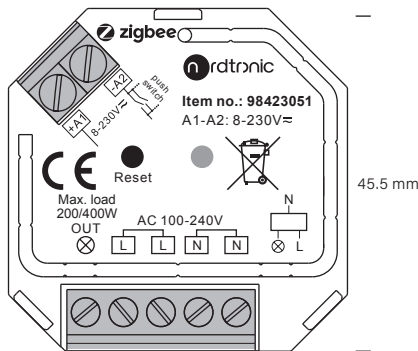
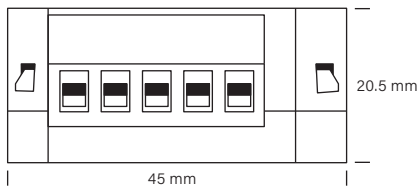


Box Relay Zigbee



Input voltage	Output voltage	Output current	Max. thermal loss
100-240VAC	100-240VAC	Max. 1.8mA	3W

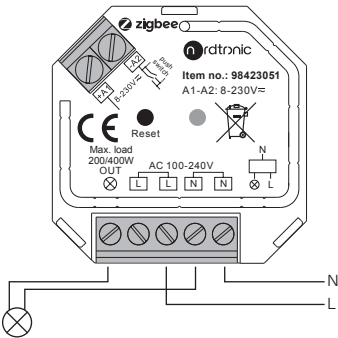
Compatible load types			
Load symbol	Load type	Maximum load	Remarks
	LED lamps with transformers	200W @ 220V 100W @ 110V	Due to variety of LED lamp designs, maximum number of LED lamps is further dependent on power factor result when connected to switch
	LED drivers	200W @ 220V 100W @ 110V	Maximum permitted number of drivers is 200W divided by driver nameplate power rating
	Incandescent lighting, HV Halogen lamps	400W @ 220V 200W @ 110V	
	Low voltage halogen lighting with electronic transformers	200W @ 220V 100W @ 110V	

DO NOT install with power applied to device.
DO NOT expose the device to moisture.

1. Do wiring according to connection diagram correctly.
2. This Zigbee device is a wireless receiver that communicates with a variety of Zigbee compatible systems. This receiver receives and is controlled by wireless radio signals from the compatible Zigbee system.
3. Zigbee network pairing through coordinator or hub
(Added to a Zigbee network)

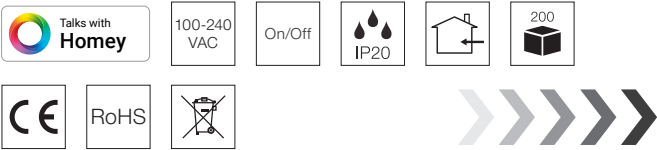
Step 1: Remove the device from previous Zigbee network if it has already been added to, otherwise pairing will fail. Please refer to the part “Reset factory settings manually”.

Step 2: From your Zigbee controller or hub interface, choose to add lighting device and enter pairing mode as instructed by the controller.

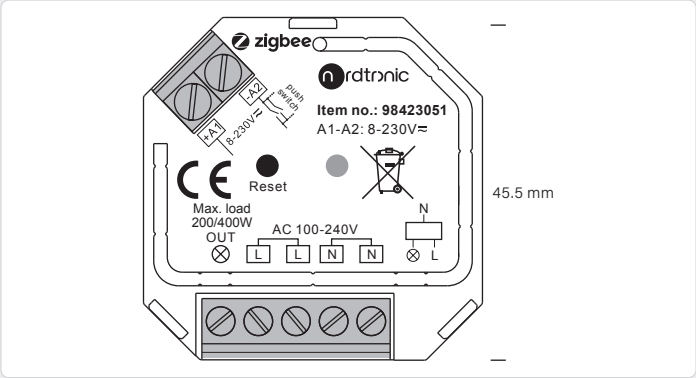
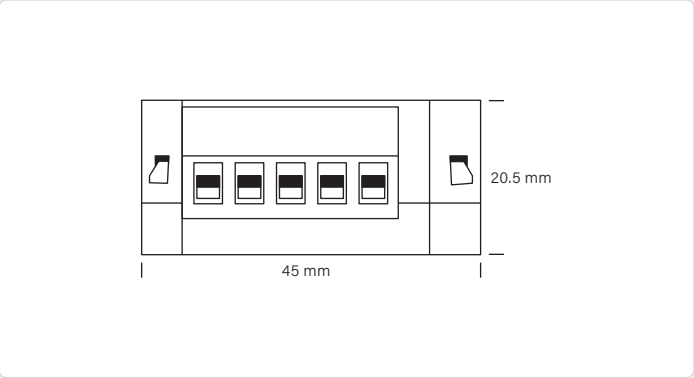


Step 3: power on the device, it will be set into network pairing mode (connected light flashes twice slowly), the network pairing mode will last until the device is added to a Zigbee network.

Step 4: Connected light will blink 5 times and then stay solid on, then the device will appear in your controller's menu as BoxRelayZ 98423051 and can be controlled through controller or hub interface.

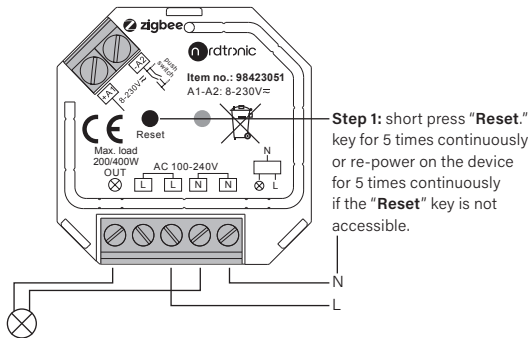


Find the updated manual on our website – nordtronic.com
With reservation for typing errors



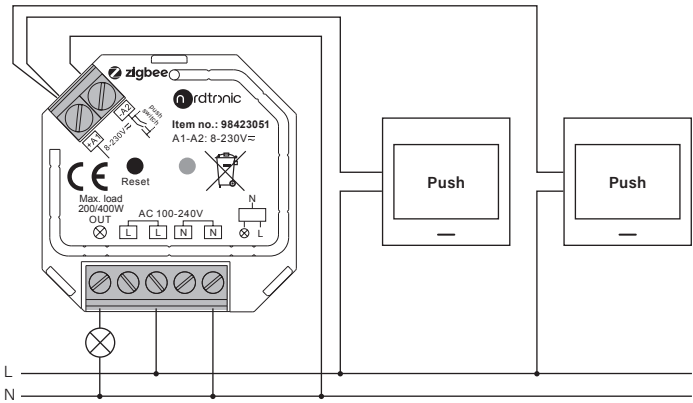
4. Reset factory settings manually

Note: All configuration parameters will be reset after the device is reset or removed from the network.

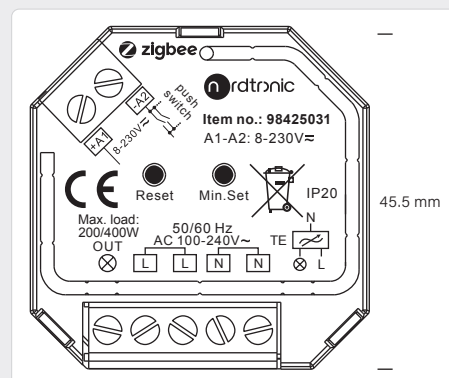
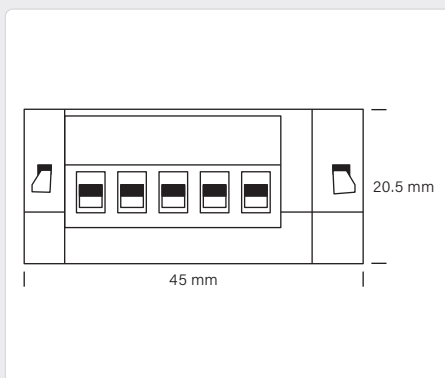
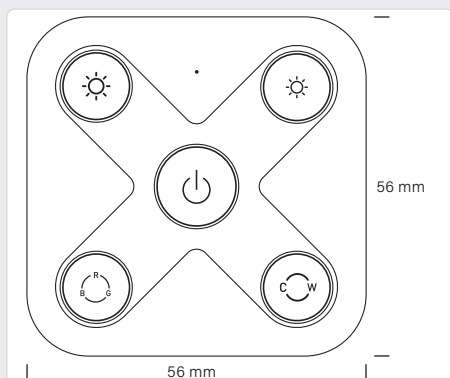


Step 2: Connected light will blink 3 times to indicate successful reset.

Wiring diagram



Switch Dimmer Zigbee



Quick start guide

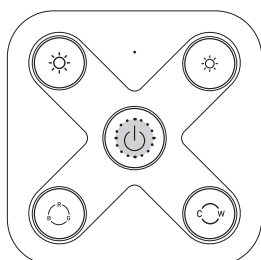
Setup/pairing of Wireless switch Zigbee with Box Dimmer Zigbee or Box Relay Zigbee.

1. Factory Reset all components.

Wireless S witch Zigbee

Step 1: Press and hold down the **On/Off button** until the LED indicator turns on.

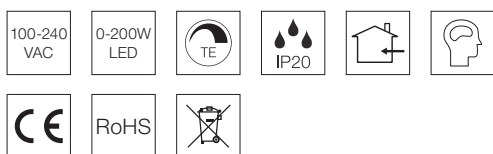
Step 2: Immediately short press the **On/Off button** 5 times continuously. The LED indicator flashes 3 times quickly to indicate successful reset.



Wireless Switch Zigbee, varenr. 98426061



Box Dimmer Zigbee, varenr. 98425031

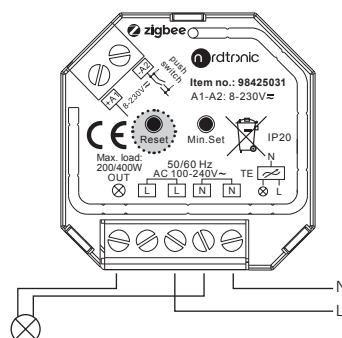


Box Dimmer Zigbee / Box Relay Zigbee

Step 1: Short press **Reset** for 5 times continuously.

If the Box product is not accessible repower the device for 5 times continuously.

Step 2: The light connected to the Box product will blink 3 times to indicate successful reset.



Box Relay Zigbee, varenr. 98423051



Find the updated manual on our website – nordtronic.com
With reservation for typing errors

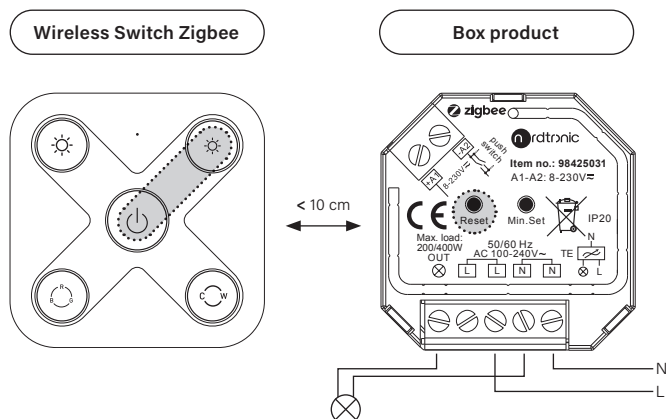
Nordtronic A/S | Flade Engvej 4 | DK-9900 Frederikshavn | Denmark | CVR: 29808708
Tel: +45 7020 9531 | nordtronic.com

Manual
98427010 | 01-2025

Switch Dimmer Zigbee

- Put the Box product into pairing mode by 4 short presses on Reset. The connected light will flash 2 times to show the pairing mode is started. It will search for 180S before time out.
- Bring Wireless Switch Zigbee within 10 cm of the Box product.
- Pair Wireless Switch Zigbee to Box product via Touchlink.
Press and hold down the **On/Off button** until the LED indicator turns on, then immediately short press the **Dim down button** to start Touchlink commissioning of Wireless Switch Zigbee.
LED indicator flashes fast for 3S, then flashes 6 times slowly to indicate successful pairing to the device and the light connected to the Box product will blink twice.
To add multiple Wireless Switch Zigbee units, continue to step 5.

Touch link



- Make sure the Box product is still in pairing mode, if not redo step 2 before continuing to step 6.
- Ad Wireless Switch Zigbee to the Box product's Zigbee network.
Press and hold down the **On/Off button** on the Wireless Switch Zigbee until LED indicator turns on, then immediately short press **Dim Up button** to start the Zigbee network pairing mode.
The LED indicator flashes fast for 3S, then flashes 6 times slowly to indicate successful pairing to the Zigbee network.
- Bring Wireless Switch Zigbee within 10 cm of the Box product.
- Pair Wireless Switch Zigbee to Box product via Touch link.
Press and hold down the **On/Off button** until the LED indicator turns on, then immediately short press **Dim down button** to start Touchlink commissioning of Wireless Switch Zigbee.
The LED indicator flashes fast for 3S, then flashes 6 times slowly to indicate successful pairing to the device and the light connected to the Box product will blink twice.

Pairing to Zigbee network

